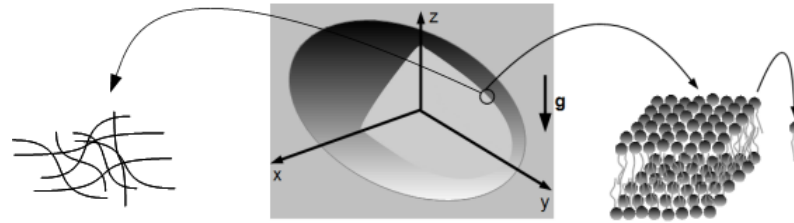
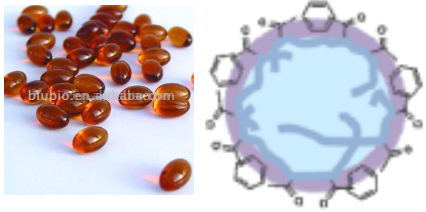


Membrane mechanics of soft particles

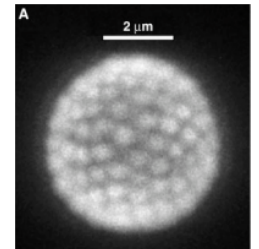
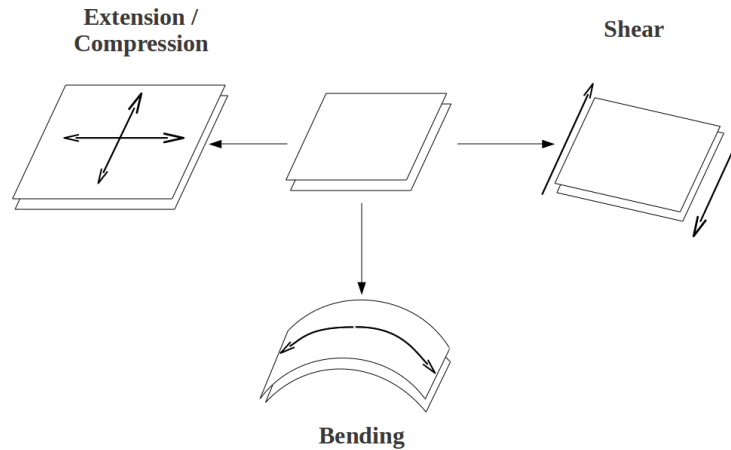


Self-organization

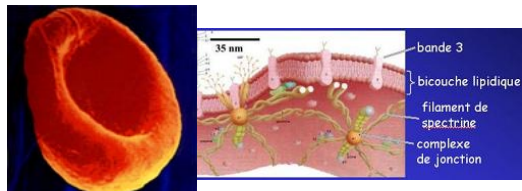
Capsule :
Polymerized membrane



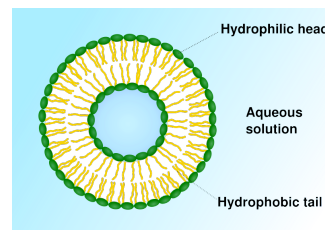
Weak or strong



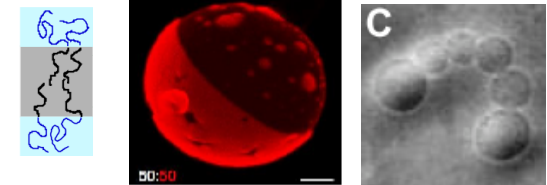
Colloidosome
Weitz's lab



Red Blood Cells :
Lipid bilayer + spectrin network



Vesicle, a closed lipid bilayer



Polymersome : a closed
copolymer bilayer
Disher...Hammer, Science 1999